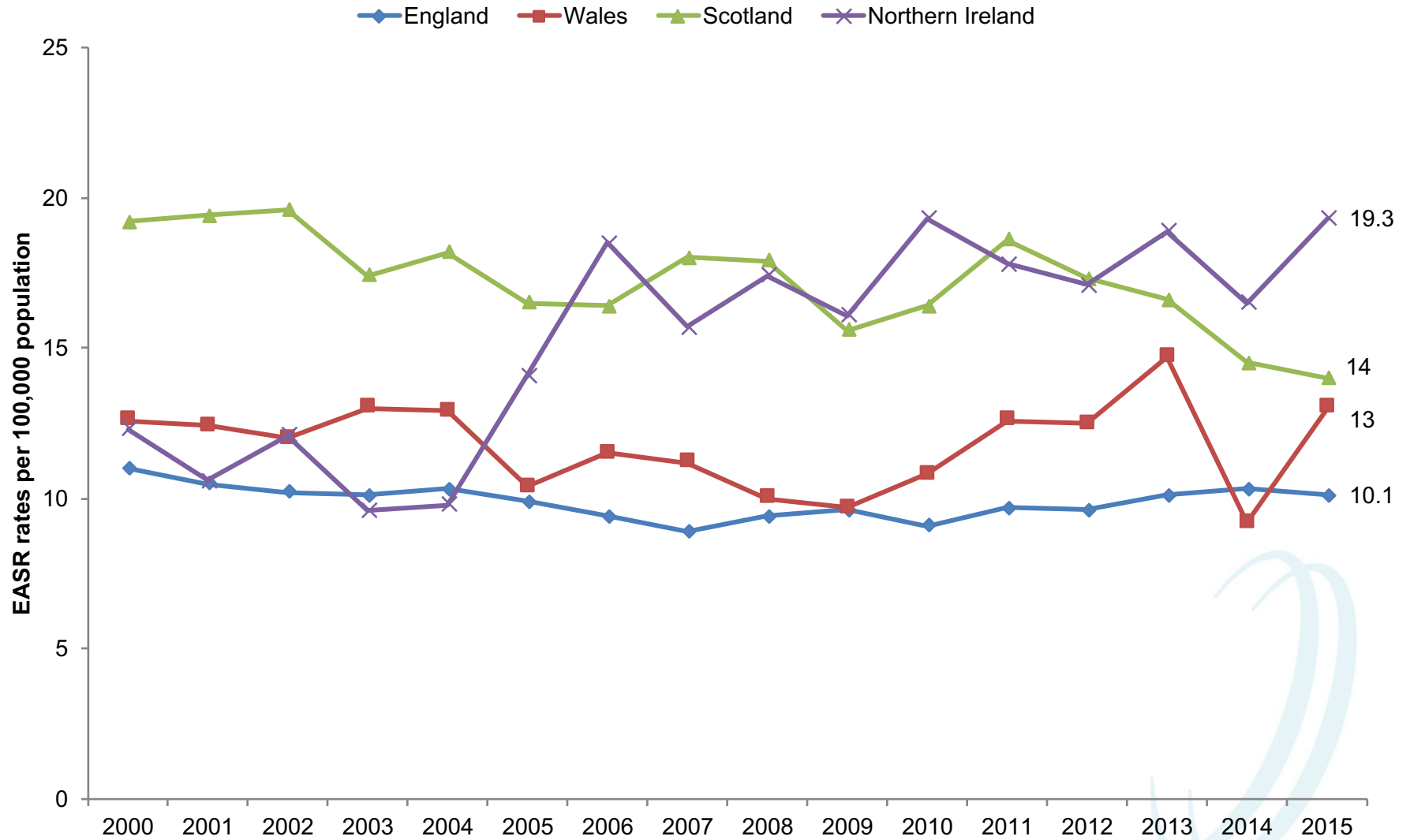


Maurice Meehan
Head of Health and Social
Wellbeing Improvement
maurice.meehan@hscni.net

UK Suicide Rates by Region, 2015



Public Health
Agency

Improving Your Health and Wellbeing

A place of contrasts

Happiest 15 year olds in the UK



Suicide now biggest single cause of death in 15-19 year olds

- Highest rate of suicides in the UK
- Three times more likely to die by suicide if you live in the most deprived areas than in the least deprived

Maurice Meehan

Head of Health and Social Wellbeing
Improvement

Maurice.Meehan@hscni.net



A place of contrasts

	Most deprived	Northern Ireland	Least deprived
Low Birth Weight % 2016(p)	7.5	6.3	5.7
Infant Mortality Rate per 1000 live Births (2010-2014)	5.2	4.6	4.5
Breast feeding at discharge (2015) %	30	46	63
Avoidable deaths children and young people 2010-2014 per 100,000	34	26	19
Primary one pupils (4-5 year olds) Overweight or Obese - % 2014/15	23.7	21.0	17.4
GCSE educational attainment 5 GCSE A*-C including English and Maths- 2013/14 - %	39.4	63.5	81.1

Towards a Better Future Report: Impact of the Conflict's Legacy on Early Years



Towards a Better Future Report: Impact of the Troubles legacy on early years development

- Growing awareness that trauma-related conditions in parents are associated with poor psychological functioning in their children;
- Approximately 15% of the population who experienced conflict-related activity went on to develop mental health difficulties equating to around 213,000 adults;
- Tomlinson (2012) over 40% of children growing up in NI are living with parents who had a high or moderate experience of the conflict;
- UU-CVSNI (2011) est 18,000 individuals met the criteria for conflict-related PTSD (within the previous 12 months) in NI.
- Parental trauma exposures interfere with 'interaction patterns' within families:

Programme for Government

OUTCOMES

INDICATORS

We prosper through a STRONG, COMPETITIVE regionally balanced economy



01

- Private sector NICEI
- External sales
- Rate of innovation activity (% of companies engaging in innovation activity)
- Employment rate by council area
- % change in energy security of supply margin

We live and work sustainably - protecting the environment



02

- % all journeys which are made by walking/cycling/public transport
- Greenhouse gas emissions
- % household waste that is reused, recycled or composted
- Annual mean nitrogen dioxide concentration at monitored urban roadside locations
- % water bodies at 'good' status
- Biodiversity

We have a MORE EQUAL SOCIETY



03

- Gap between highest and lowest deprivation quintile in healthy life expectancy at birth
- Gap between % non-FSME school leavers and % FSME school leavers achieving at Level 2 or above including English & Maths
- % population living in absolute and relative poverty (before housing costs)
- Employment rate of 16-64 year olds by deprivation quintile
- Economic inactivity rate excluding students
- Employment rate by council area

We enjoy long, healthy, active lives



04

- Healthy life expectancy at birth
- Preventable mortality
- % population with GHQ12 scores ≥ 4 (signifying possible mental health problem)
- % babies born at low birth weight
- % people who are satisfied with health and social care
- Gap between highest and lowest deprivation quintile in healthy life expectancy at birth

We are an INNOVATIVE, CREATIVE, SOCIETY, where people can fulfil their potential



05

- Rate of innovation activity (% of companies engaging in innovation activity)
- Proportion of premises with access to broadband services at speeds at or above 30Mbps
- % engaging in arts/cultural activities in the past year
- Self-efficacy
- % school leavers achieving at least level 2 or above including English and Maths

We have more people working in better jobs



06

- Economic inactivity rate excluding students
- Proportion of the workforce in employment qualified to level 1 and above, level 2 and above, level 3 and above, and level 4 and above
- Seasonally adjusted employment rate (16-64)
- A Better Jobs Index
- % people working part time who would like to work more hours
- Employment rate by council area
- Proportion of local graduates from local institutions in professional or management occupations or in further study six months after graduation

We have a SAFE COMMUNITY where we respect the law, and each other



07

- Prevalence rate (% of the population who were victims of any NI Crime Survey crime)
- A Respect Index
- % the population who believe their cultural identity is respected by society
- Average time taken to complete criminal cases
- Reoffending rate

Programme for Government

OUTCOMES

INDICATORS

WE CARE FOR OTHERS AND WE HELP THOSE IN NEED



08

- % population with GHQ12 scores ≥ 4 (signifying possible mental health problem)
- Number of adults receiving personal care at home or self directed support for personal care as a % of the total number of adults needing care
- % care leavers who, aged 19, were in education, training or employment
- % population living in absolute and relative poverty (before housing costs)
- Average life satisfaction score of people with disabilities
- Number of households in housing stress

We are a shared society that respects diversity



09

- A Respect Index
- % who think all leisure centres, parks, libraries and shopping centres in their areas are "shared and open" to both Protestants and Catholics
- % of the population who believe their cultural identity is respected by society
- Average life satisfaction score of people with disabilities

WE ARE A CONFIDENT, WELCOMING, OUTWARD-LOOKING SOCIETY



10

- A Respect Index
- Self-efficacy
- Total spend by external visitors
- % of the population who believe their cultural identity is respected by society
- Nation Brands Index

We have HIGH QUALITY public services



11

- % of people who are satisfied with health and social care
- % of schools found to be good or better
- Usage of online channels to access public services

We have created a place where people want to live & work, to visit & invest



12

- Prevalence rate (% of the population who were victims of any NI Crime Survey crime)
- Total spend by external visitors
- % of the population who believe their cultural identity is respected by society
- Nation Brands Index
- A Better Jobs Index

We connect people and opportunities through our infrastructure



13

- Average journey time on key economic corridors
- Proportion of premises with access to broadband services at speeds at or above 30Mbps
- % of all journeys which are made by walking/cycling/public transport
- Overall Performance Assessment (NI Water)
- Gap between the number of houses we need, and the number of houses we have
- % babies born at low birth weight

We give our children and young people the BEST START IN LIFE



14

- % children at appropriate stage of development in their immediate pre-school year
- % schools found to be good or better
- Gap between the number of houses we need, and the number of houses we have
- % children at appropriate stage of development in their immediate pre-school year
- % schools found to be good or better



Department of
Health
An Roinn Sláinte
Máinnistrie O Poustle
www.health-ni.gov.uk



MAKING LIFE BETTER

A WHOLE SYSTEM STRATEGIC FRAMEWORK FOR PUBLIC HEALTH

2013 - 2023

6 THEMES

Giving Every Child the Best Start

Equipped throughout Life

Empowering Healthy Living

Creating the Conditions

Empowering Communities

Developing Collaboration



What is OBA

1. Population Accountability

about the wellbeing of whole populations
(For Communities, Trusts, Cities, Nation)

2. Performance Accountability

about the wellbeing of customer
populations
(For services, agencies, service systems etc.)



Public Health
Agency

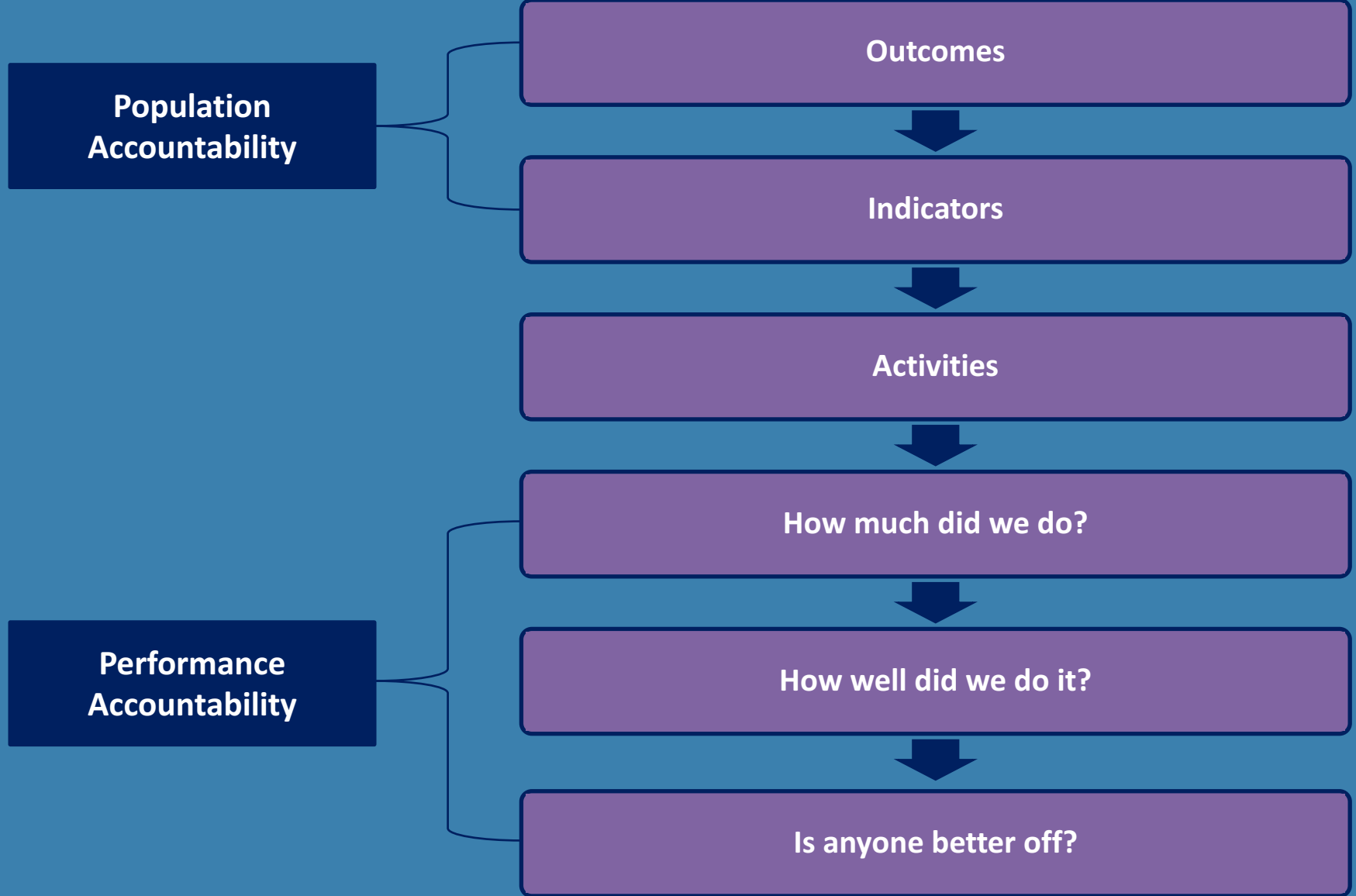


Department of
Health

An Roinn Sláinte

Mánnystrie O Poustie

www.health-ni.gov.uk



	Quantity	or	Quality
Input	How much did we do?		How well did we do it?
Effort	#		%
Output	<u>Is anyone better off as a result?</u> How much change or effect did we produce?		
Effect	#		%

Our Outcomes and Indicators

Outcomes

- **Outcome 3:** We have a more equal society (Indicator 2)
- **Outcome 4:** We enjoy long, healthy, active lives (Indicators 2, 3, 4 and 7)
- **Outcome 14:** We give our children and young people the best start in life (Indicator 7)
- **Outcome 15:** % children who are at the appropriate stage of development in their immediate pre-school year (DE)

Indicators

- 2. Gap between highest and lowest deprivation quintile in healthy life expectancy at birth
- 3. Healthy life expectancy at birth
- 4. Preventable mortality
- 7. % babies born at low birth weight



Policy Drivers –

- Graham Allen MP 'Early Investment, Smart Investment Report' 2011
- NICCY/ QUB 'Still Vulnerable: The Impact of Early Childhood Experiences on Adolescent Suicide and Accidental Death' 2012
- CAMHS Stepped Care Implementation-Bamford/DHSSPS 2012
- 'First 1000 days' Wave/DE Report 2014
- 'Early Intervention Transformation Programme OFMDFM/AP 2014
- 'Making Life Better' NI Public Health Framework 2014
- 'Building Greater Britons' Report All Party Parliamentary Group for Conception to Age 2 – The First 1001 Days 2015
- Perinatal Mental Health Pathway - LSE-Maternal Mental Health Alliance 2015
- Protect Life/Mental Health promotion strategy 2016
- Infant Mental Health Framework for NI <http://pha.site/IMHF> 2016

Child Development Board

PHA Child Development Project Board

5 Trusts

HSCB

Academic
(QUB)

Key Sectoral
Specialists

Infant
Mental Health
Training
& Plan

Evidence
Based
Parenting
Programmes

Healthy
Child
Healthy
Future

Family
Nurse
Partnerships

Social
Complexity
Proposal

Breastfeeding
Strategy &
Action Plan

Research
& Evaluation

Early Years Intervention Model



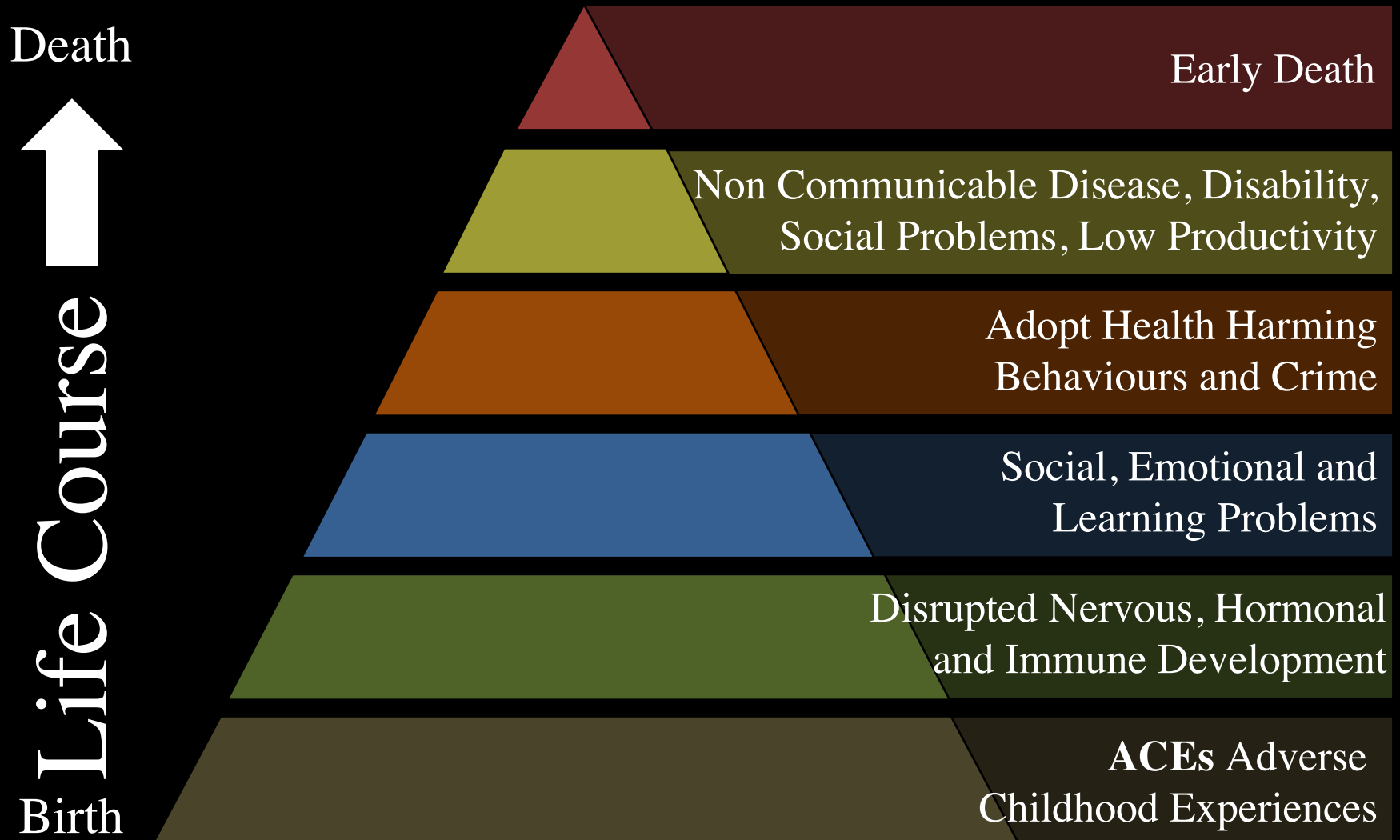
Delivering Social
Change across
Northern Ireland

Intervention across the life course

Programmes include:



Adverse Childhood Experiences ACEs - The Life Course



UK: Compared with no ACEs, those with 4+ ACEs were:

- 2x** more likely to **binge drink**
- 3x** more likely to be **current smoker**
- 5x** more likely to have had **sex under 16 years**
- 7x** more likely to be involved in **recent violence**
- 11x** more likely to have **used heroin or crack**
- 11x** more likely to have been **incarcerated**

INDEPENDENT OF POVERTY



If they had no ACEs problems could be reduced by:



Smoking
16%



Early Sex
33%



Heroin/Crack
59%



Binge Drinking
15%



Violence
60%

Aged 18-70 years

Supporting Parents – Preventing ACEs



Nurse Home Visiting

Improve parent skills, support maternal mental health.

Often for younger, poorer, new mothers.

Benefits

- ↓ Child maltreatment
- ↓ Visits for child injury to Health services



Parenting Programmes

Social worker or Nurse Improving parents' skills, knowledge and confidence for child's development.

Benefits

- ↓ Child maltreatment
- ↑ Child-parent relationships
- ↓ Parental stress
- ↓ Child conduct issues



Preschool Enrichment

Social, emotional and educational skills development continuing into school often with parenting programmes.

Benefits

- ↓ Child maltreatment
- ↑ High school completion
- ↓ Arrests for violent offences
- ↑ In mid 20s more employed



Screening Parents

Paediatric training for clinicians on identifying risk for child maltreatment in low income areas

Benefits

- ↓ Child maltreatment
- ↓ Harsh physical punishment
- ↑ Professional skills

www.aces.me.uk

MACE Project Overview



AIM: To transform the lives of vulnerable children families who are at risk from multiple adversities in their lives, by identifying, intervening early and provide nurturing support within their own homes and communities.

TARGET POPULATION: Children within the age groups 0-3 and 11-13 and their families.

OBJECTIVES:

1. To establish an adversity matrix and risk stratification tool which will allow for early identification of vulnerable families
2. Develop a range of interventions to those assessed using the adversity matrix and/or risk stratification tool

DURATION: 48 months

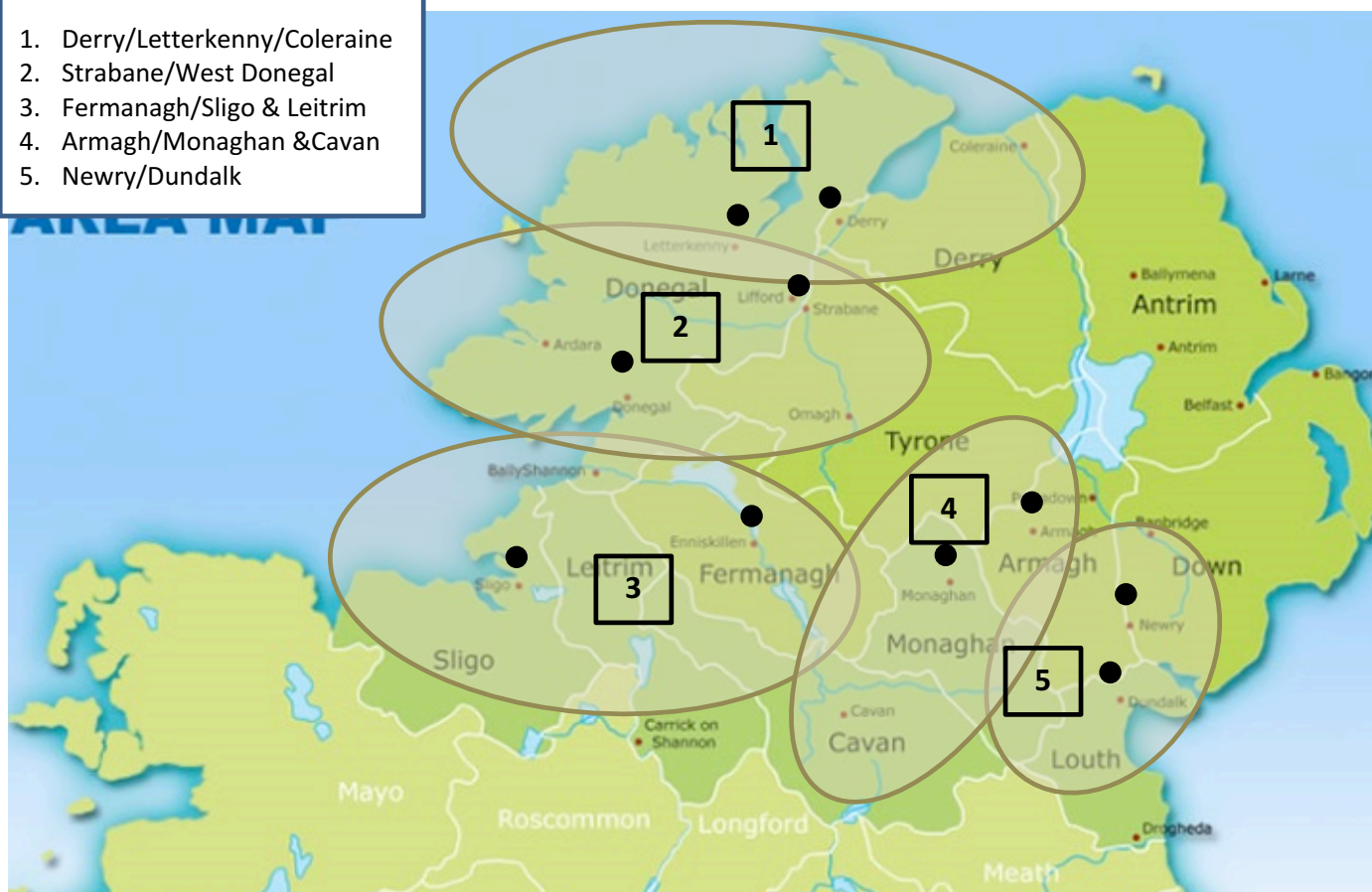
START DATE: 1st July 2017 – 30th June 2021

BUDGET: €5,010,240

PARTNERS: WHSCT, SHSCT, HSCB, PHA, TUSLA & HSE (Lead Partner)

Indicative cross border community network areas

1. Derry/Letterkenny/Coleraine
2. Strabane/West Donegal
3. Fermanagh/Sligo & Leitrim
4. Armagh/Monaghan & Cavan
5. Newry/Dundalk





Public Health
Agency

Infant Mental Health Framework for Northern Ireland

Promoting positive social and emotional development from pre-birth to 3 years





Public Health
Agency

Jack Shonkoff

Neuroscience suggest that interventions that enhance the mental health, executive function skills and self regulation capacities of vulnerable mothers suggest promising strategies to protect the developing brains of their children





Public Health
Agency

Enduring impact of early maternal care ..during critical periods in early brain development in health and disease is likely to be one of the most important discoveries in all of science –Leckman and March 2011 –Journal of Child Psychology and Psychiatry





Public Health
Agency

Vision

The aim of the IMH framework is to ensure that all children have the best start in life by prioritising and supporting the development of positive social and emotional wellbeing



Public Health
Agency

Theme

1. Evidence and policy

The framework commits to ensuring that policy, practice and service development are informed by the most up to date evidence on child development and infant mental health

- 25% increase in childcare investment in NR areas
- Influenced profile of SIF Proposals
- Adversity Assessment Matrix-CAWT





Public Health
Agency

Theme

2. Workforce development

The framework prioritises the need for practitioners to be fully equipped to promote positive social and emotional development, to identify any issues at an early stage, and to seek timely help for families at risk

- Solihull Approach
- Video Interactive Guidance
- Infant Mental Health/Early Years Diploma





Public Health
Agency

Theme

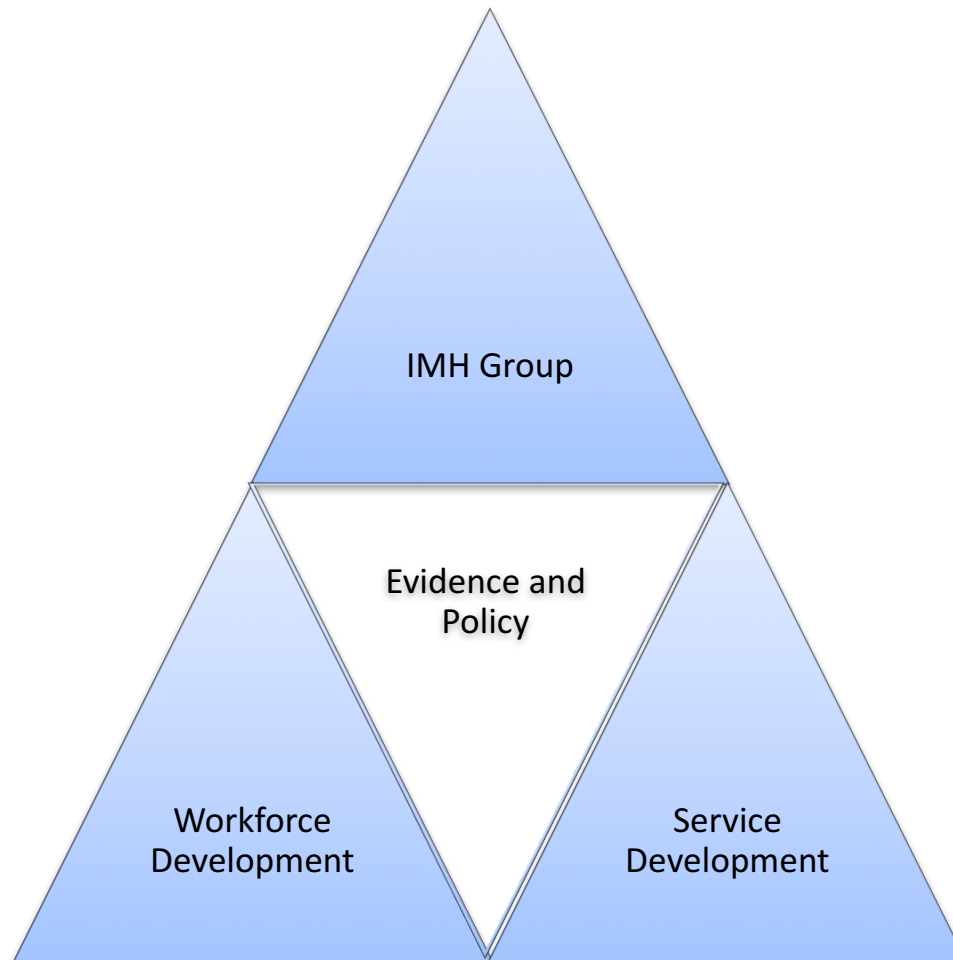
3. Service Development

The framework highlights the importance of appropriate services, both universal and targeted, to support parents and hence promote healthy social and emotional development of infants

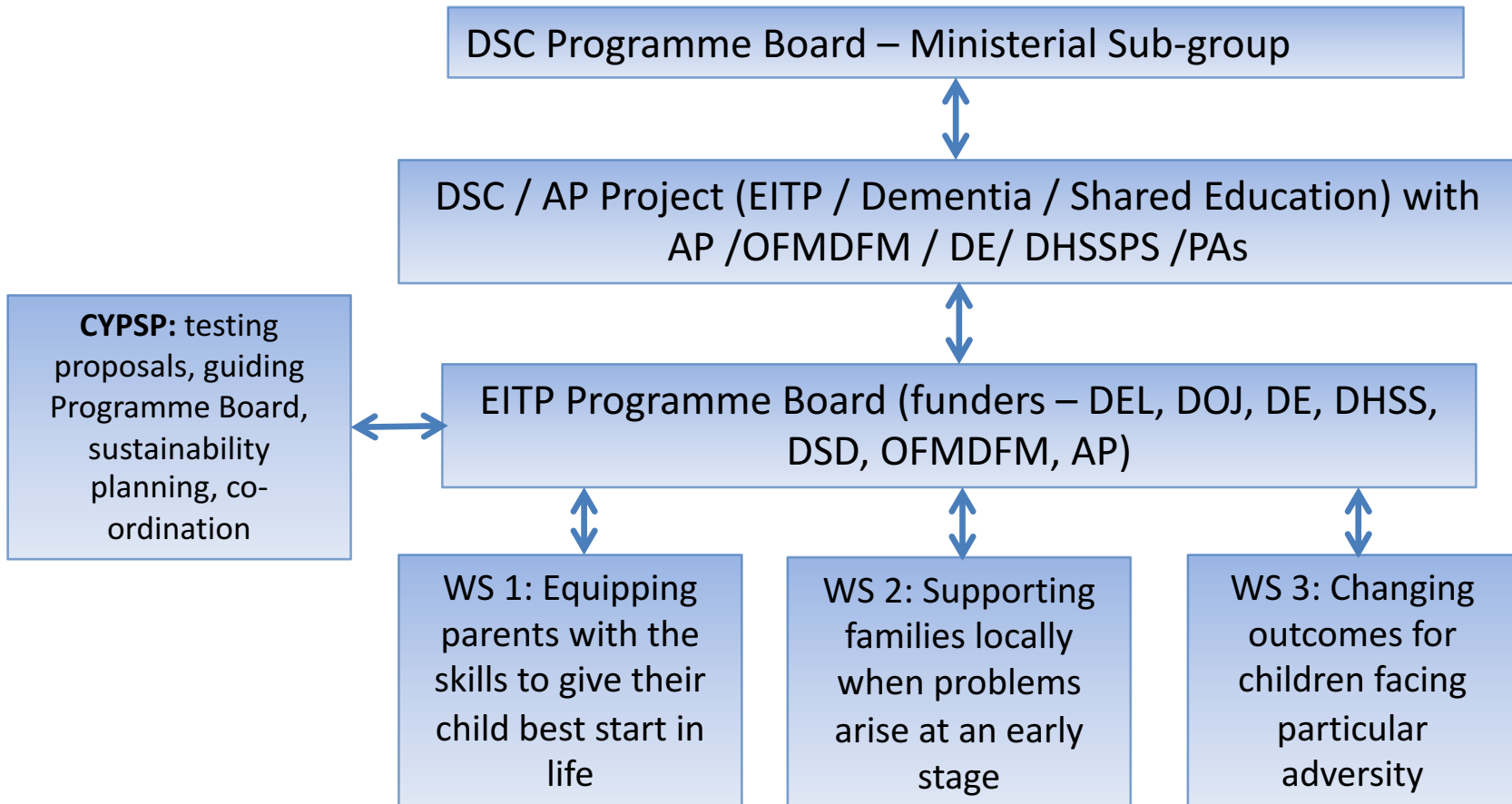
- Explore how to strengthen and build infant centred services
- Improved peri natal mental Health pathway



Implementation



Early Intervention Transformation Programme



The
ATLANTIC
Philanthropies

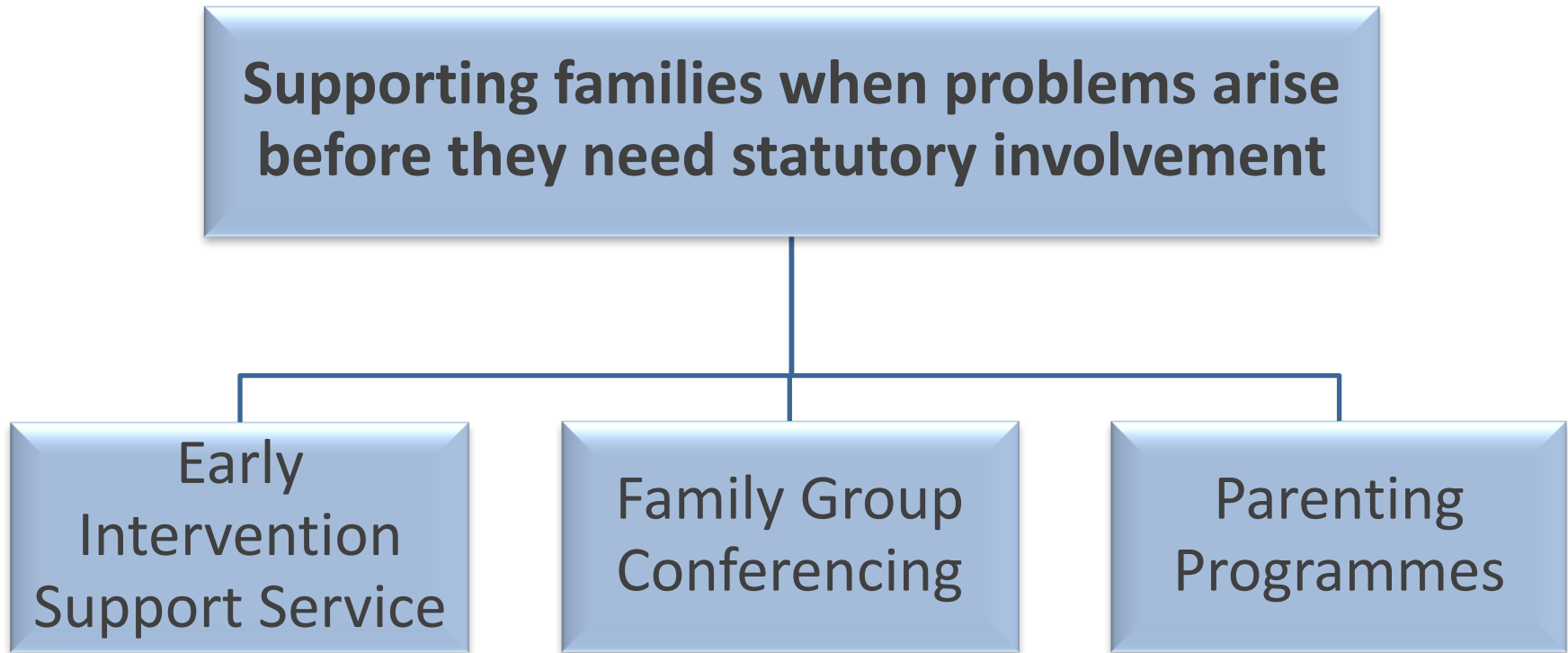


**Northern Ireland
Executive**

www.northernireland.gov.uk

DELIVERING SOCIAL CHANGE

Early Intervention Support Service Model



The
ATLANTIC
Philanthropies



**Northern Ireland
Executive**

www.northernireland.gov.uk

DELIVERING SOCIAL CHANGE

What are we learning

