

Western Area Outcomes Group

Welcomes You

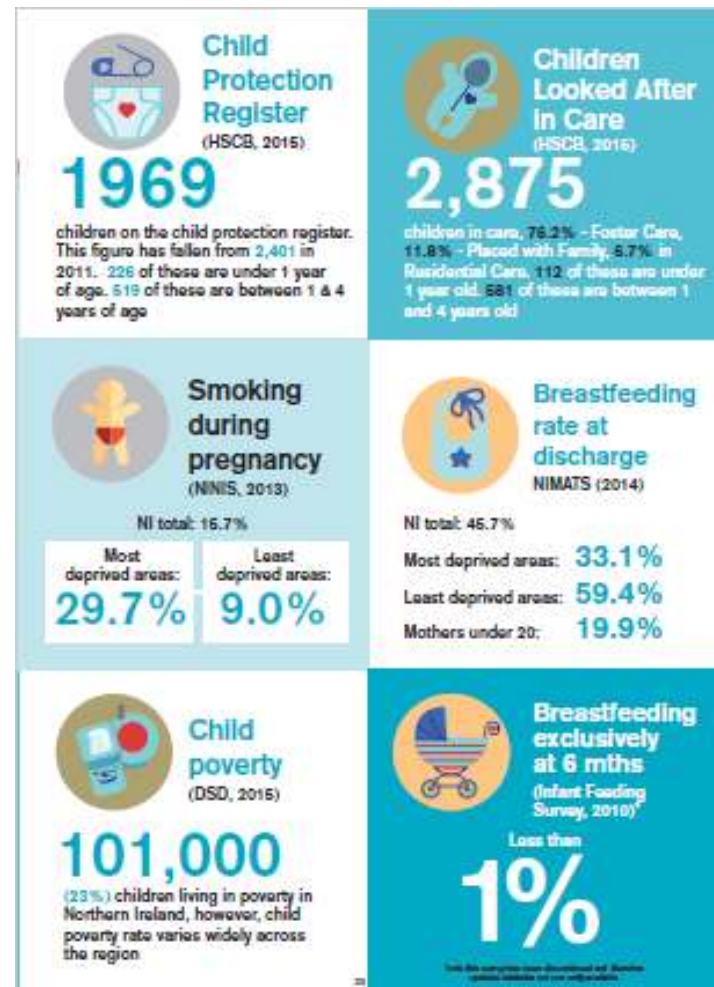
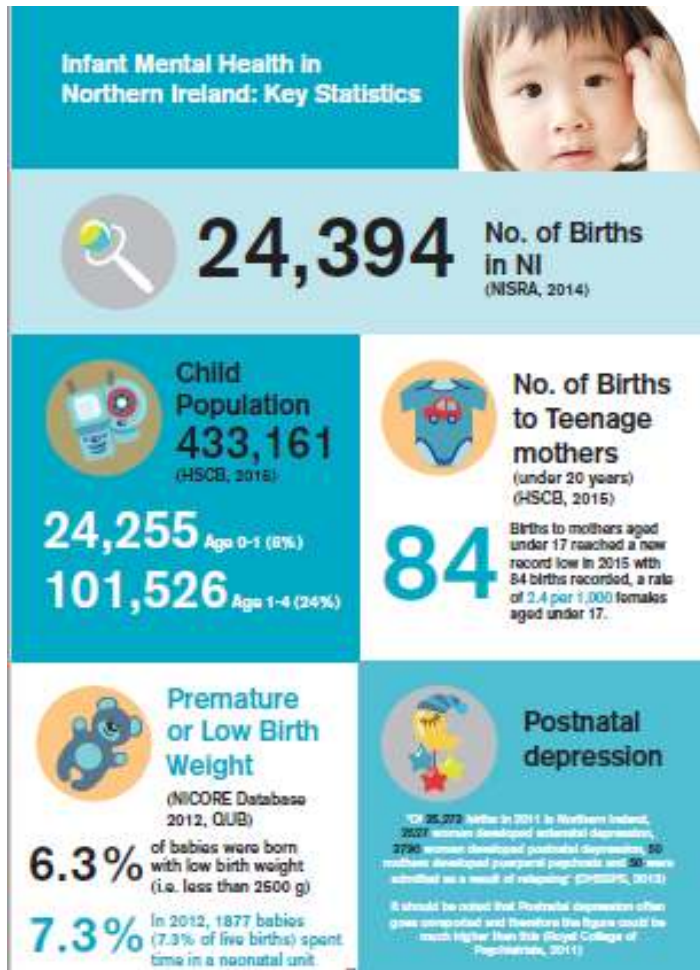
Kieran Downey
Director of Women & Children's Services
Western Health & Social Care Trust
and Chair of Western Area Outcomes Group

Purpose of CYPSP

To develop and maintain integrated planning and commissioning across agencies and sectors, aimed at improving wellbeing and the realization of rights of children in NI, in relation to the 8 outcomes for children



The Northern Ireland context





Western Area Outcomes Group

Children and Young People's Plan 2017 - 2020

What We Will Do?

Our Vision

The Western Area Outcomes Group will promote better outcomes for children by supporting parents and carers in their role as they nurture their children's physical, social, emotional and intellectual development.

Three Obsessions

1. Every Child has the best start in life
2. Promote the safety of Our Children and Young People
3. Work together to include the voice of Children and Young People

Eight Outcomes

What we want for all our Children and Young People:

- Physical and Mental Health
- Enjoyment of Play and Leisure
- Learning and Achievement
- Living in Safety and with Stability
- Economic and
- Environmental Wellbeing
- Making a Positive Contribution to Society
- Living in a Society which Respects their Rights
- Equality and Good Relations

Priorities

1. Ensure all our children and young people are safe and thriving
2. Support families to aspire, achieve and fulfil their potential
3. Emphasis and resources are rebalanced towards prevention and earlier intervention whilst still ensuring crisis responses are appropriate
4. All children and young people's rights are promoted, respected and protected within the diversity of their experience, abilities, identities and cultures
5. Support parents and carers to feel more supported, confident, informed and able
6. Quality services are outcomes driven, resourced, sustained and trusted

How Will We Underpin Everything?

Listen & influence

Early Intervention

Outcome Based Accountability - Is Anyone Better Off?



Three Obsessions

1. Every Child has the best start in life
2. Promote the safety of Our Children and Young People
3. Work together to include the voice of Children and Young People

Road Map

 Raise Awareness

 Start a conversation.....

 Develop momentum

Western Area will become an ACE and Trauma Informed Area

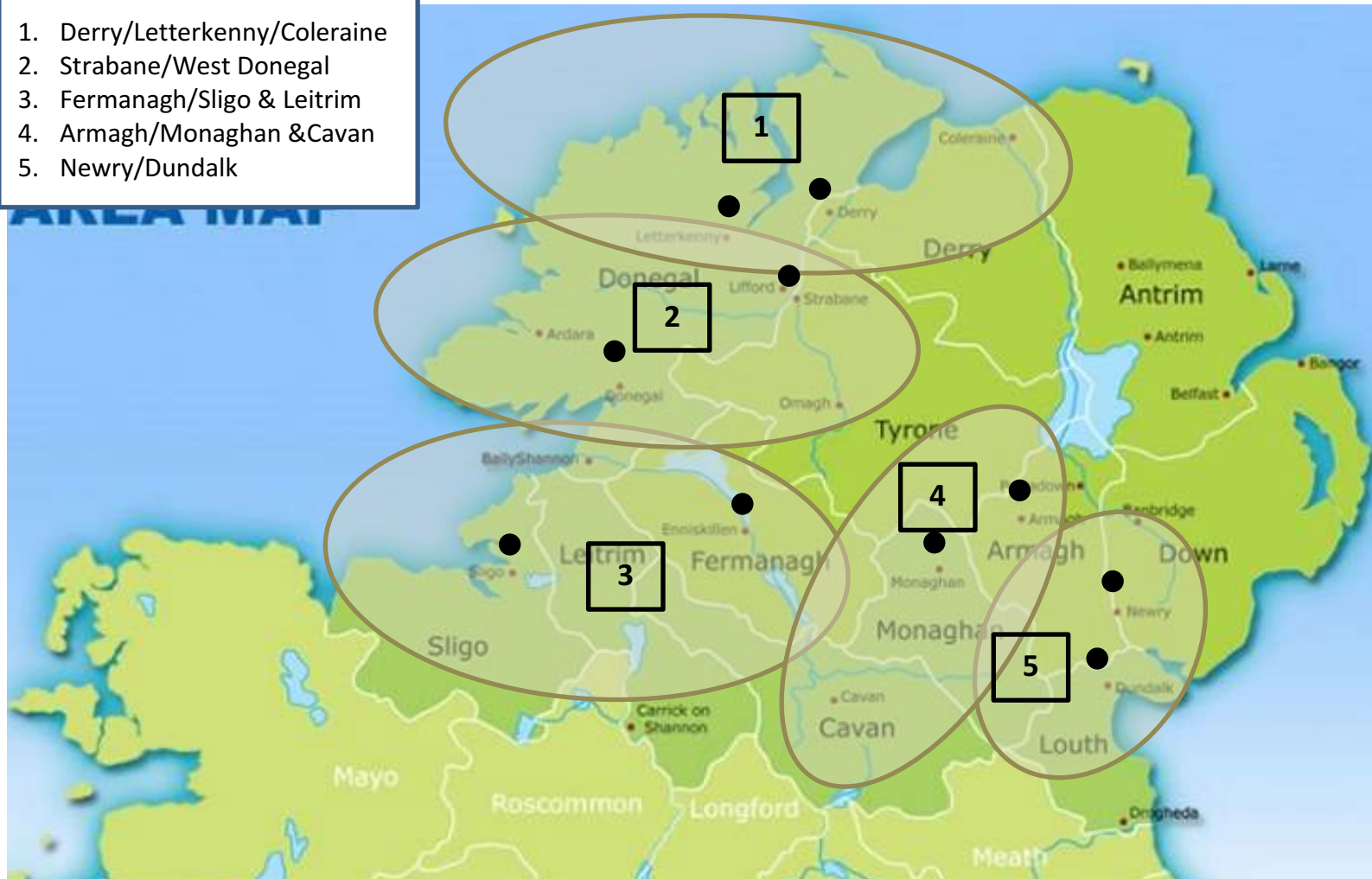
Number of Adverse Childhood Experiences (ACE Score)	CDC-Kaiser Permanente Study Total Per cent (N = 17,337)	ACE and the impact their impact on health harming behaviors in the Welsh Population Total Per cent (N = 2,028)	ACE Conference, Silverbirch Hotel, Omagh Total Per cent (N = 200)	Troubles related incidents Total Per cent (N = 200)
0	36.1%	53%	26%	47%
1	26.0%	20%	20%	12.5%
2	15.9%	13%	20%	12.5%
3	9.5%		12%	4%
4 or more	12.5%	14%	22%	24%



#ACESNI2018

Indicative cross border community network areas

1. Derry/Letterkenny/Coleraine
2. Strabane/West Donegal
3. Fermanagh/Sligo & Leitrim
4. Armagh/Monaghan & Cavan
5. Newry/Dundalk



Signs of safety is based on effecting change through developing positive relationships.

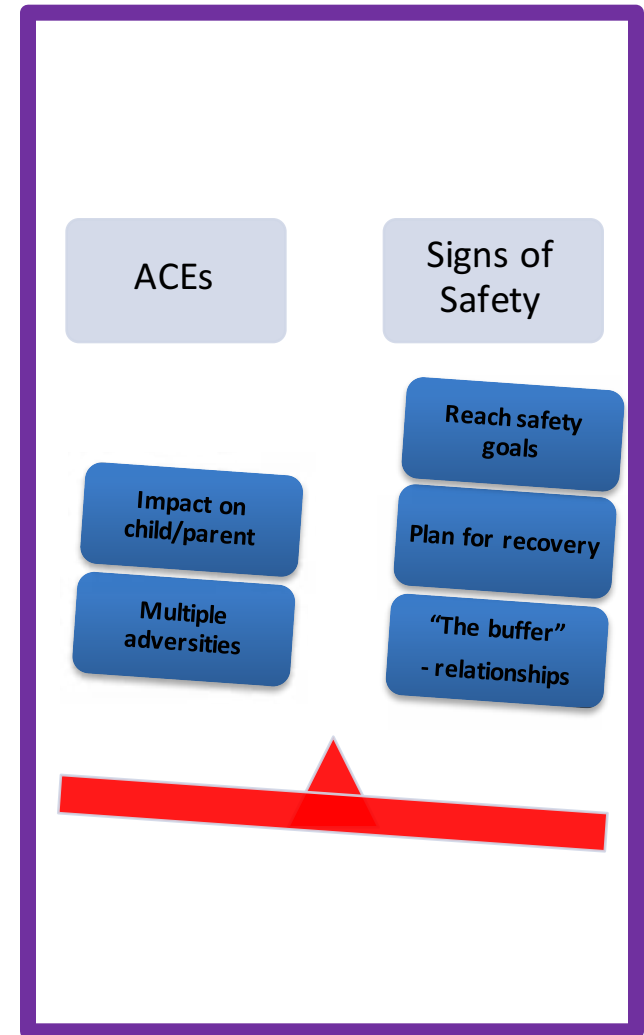
- “The more healthy relationships a child has, the more likely he will be to recover from trauma and thrive. Relationships are the agents of change and the most powerful therapy is human love”

- *Bruce D. Perry*



So How Do We Do This?

1. **Practice Principles** – crucially important – culture – how we do things around here! Skills, questioning approach to practice.
2. **Mapping and the genogram** - discovering the intergenerational stories including parents ACEs – information sharing, danger statements, safety goals, inclusion of children and families – child's voice is heard.
3. **Trajectory** – who needs to do what where when and how to help the child and family to recover. Includes social work, family network and therapeutic services working together.
4. **Words and pictures**- given the adversities that have happened both to the parents and the child it is important that the child knows and understands their story.
5. **Safety plan**- How do we reduce the impact of multiple adversities and keep the child safe?



HISTORIC CLAIMS

YOU are going to make a lot of bad choices in your life
- choosing the wrong parents, the wrong socio-economic
group, and the wrong social welfare home, where you
are going to get yourself abused. After that you are
just going to carry on making bad choices
till you end up in prison.
Or a psych ward.



When are you going to take
some responsibility for yourself?

By being ACE aware and
Trauma Informed we will
move from asking...

**“What’s wrong with
you?”**

Blame
Shame
Punishment



...to ...

**“What happened to
you?”**

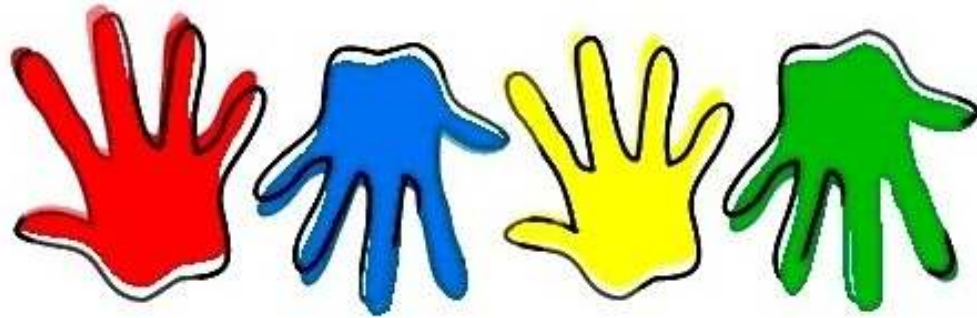
Understanding
Nurturing
Healing



A painting of a young girl with long brown hair, wearing a crown made of various colorful flowers (purple, orange, yellow). She is looking directly at the viewer with a serious expression. She is wearing a light-colored, possibly white, dress. The background is a simple, textured grey wall. To her right, there is a window with white frames and a small yellow flower on the sill.

IT IS EASIER TO BUILD
STRONG CHILDREN
THAN TO REPAIR
BROKEN ADULTS..

- F. DOUGLASS -



it takes a village to raise a child

Thank you for listening and for participating in this conversation.